

THIS DRAWING IS SOLE PROPERTY OF ACCU SHARP. COPYING / TRANSFERING OF DATA IS PROHIBITED

DRG.NO :-AS-SPL-C1154-33677

ASK IF ANY DOUBT

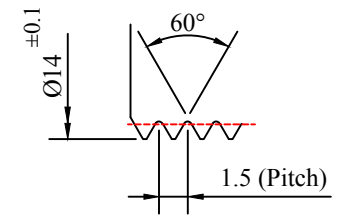
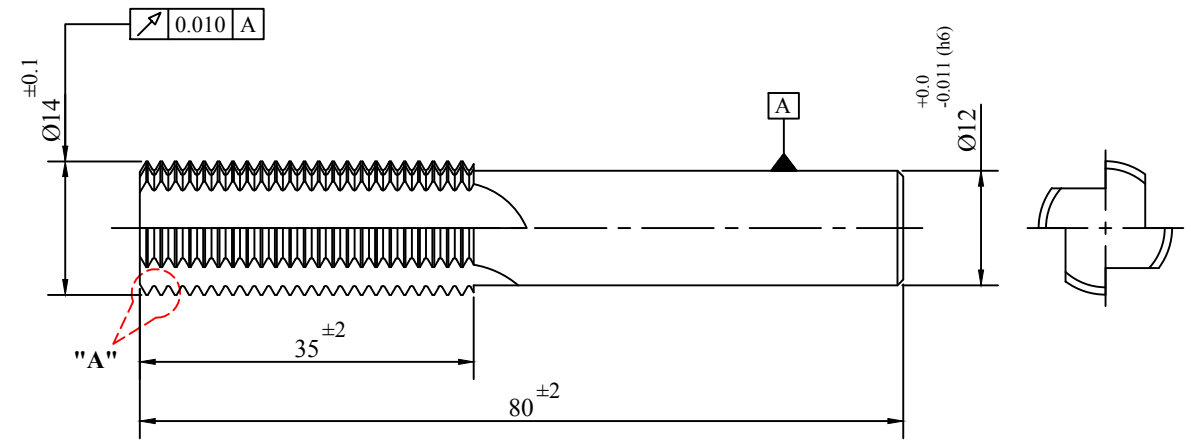
No of Teeth	04
Point Angle	-/-
Cutting Direction	RH
Flute	Straight
Coolant	External
Coating	Tinalox

Component Detail

Project Name	-/-
Component Name.	-/-
Operation	-/-
Working Depth	-/-
Component Matl	Steel
Material Hardness	-/-

Cutting Parameters

Cutting Speed	-/-
Feed	-/-



NOTES:-

- *. No Coating permitted on shank.
- *. Flute runover should be gradual & smooth.

ACCU SHARP CUTTING TOOLS PVT. LTD
W -242, J Block, MIDC Bhosari, Pune 411 026.

Description:-
AS-SPL-C1154-33677 S.C.THREADMILL
CUTTER Ø 14 X 1.5 PITCH X 35 FL X 80
OAL X Ø 12 SH

Gen Tol as Per IS 2102 (Part)-1980 (Medium)				
0.5-6	6-30	30-120	120-315	1000-2000
±0.1	±0.2	±0.3	±0.5	±0.8

Customer Drg.No:-
Part No:-

Scale: NTS	ALL DIMENSION IN MM	
Drawn	N.V.B.	02.11.2019
Checked		
Approved		



Customer Code: C1154
DRG.NO :-AS-SPL-C1154-33677

REV.	MODIFICATION	DATE	NAME
1			
2			
3			
4			